



DOLCE

CUISINE RESTAURATION

HYBRID WEAR collarless women's chef jacket:
Crossed front breastplate and V-neckline.

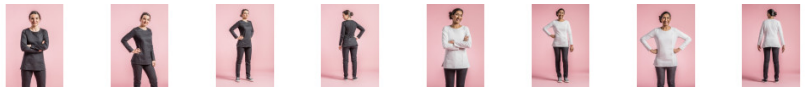
Pen pocket on left sleeve.

Side slits.

Front breastplate and lower back : 50% polyester
50% cotton in WHITE / 65% polyester 35% cotton in
BLACK, the rest in knit 60% cotton 40% polyester.

Available with short or long sleeves from size 00 to
6.

Colors : WHITE / BLACK Men's version (short sleeves
only): ZEST



Size: XS T0 T1 T2 T3 T4 T5 T6

features: long sleeve

Washing tips:



TECHNOLOGIE
HYBRID
WEAR

The HYBRID WEAR concept consists of mixing together
different fabrics in order to create a unique garment: it's
the perfect fall of a polyester cotton warp and weft weave
coupled with the absolute comfort of a non-deformable
technical jersey fabric.

